

SPACE  
TO LET

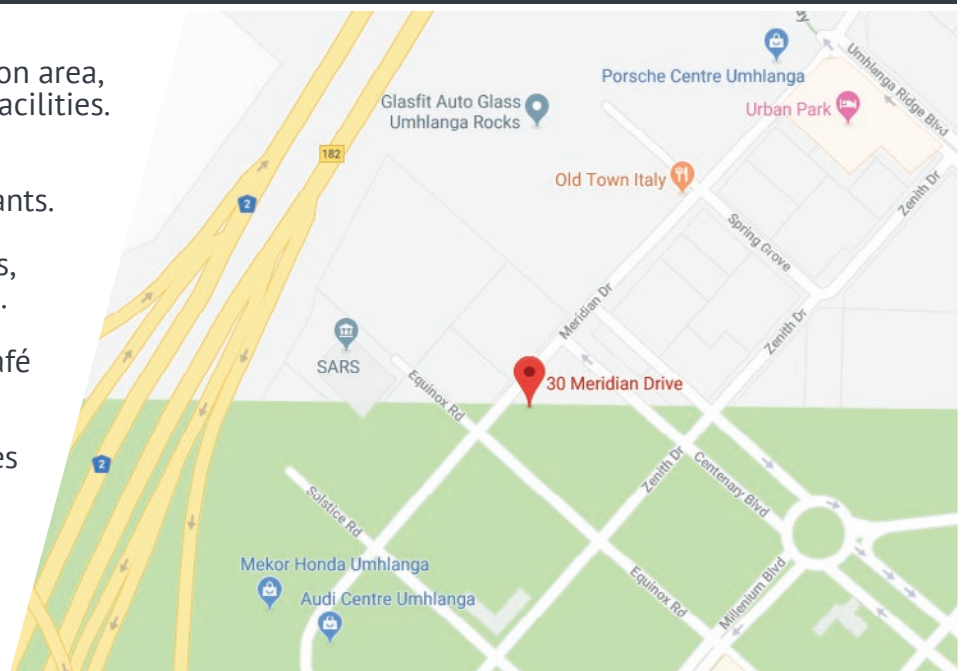


# CENTENARY BUILDING

30 Meridian Drive, Umhlanga

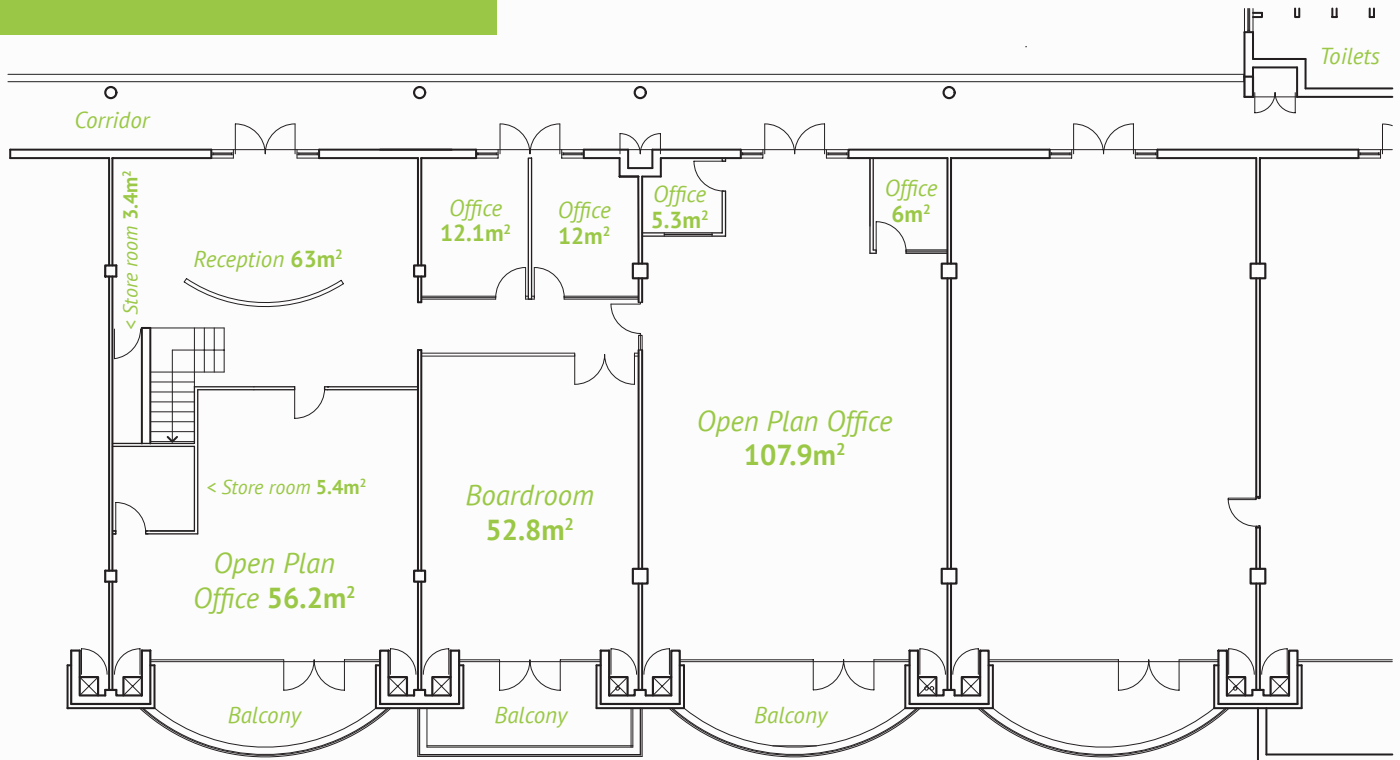
Nestled in the heart of the Umhlanga Ridge, and spread over two floors is 1636m<sup>2</sup> of premium, secure office space. The space is offered as a whole, or subdivided for smaller businesses.

- ✓ Own access, professional reception area, meeting rooms and boardroom facilities.
- ✓ Walking distance to Gateway, the Crescent, hotels, and restaurants.
- ✓ Convenient public transport links, and easy access from M4 and N2.
- ✓ Secure open air courtyard and café within the premises.
- ✓ Secure undercover parking spaces available to rent.



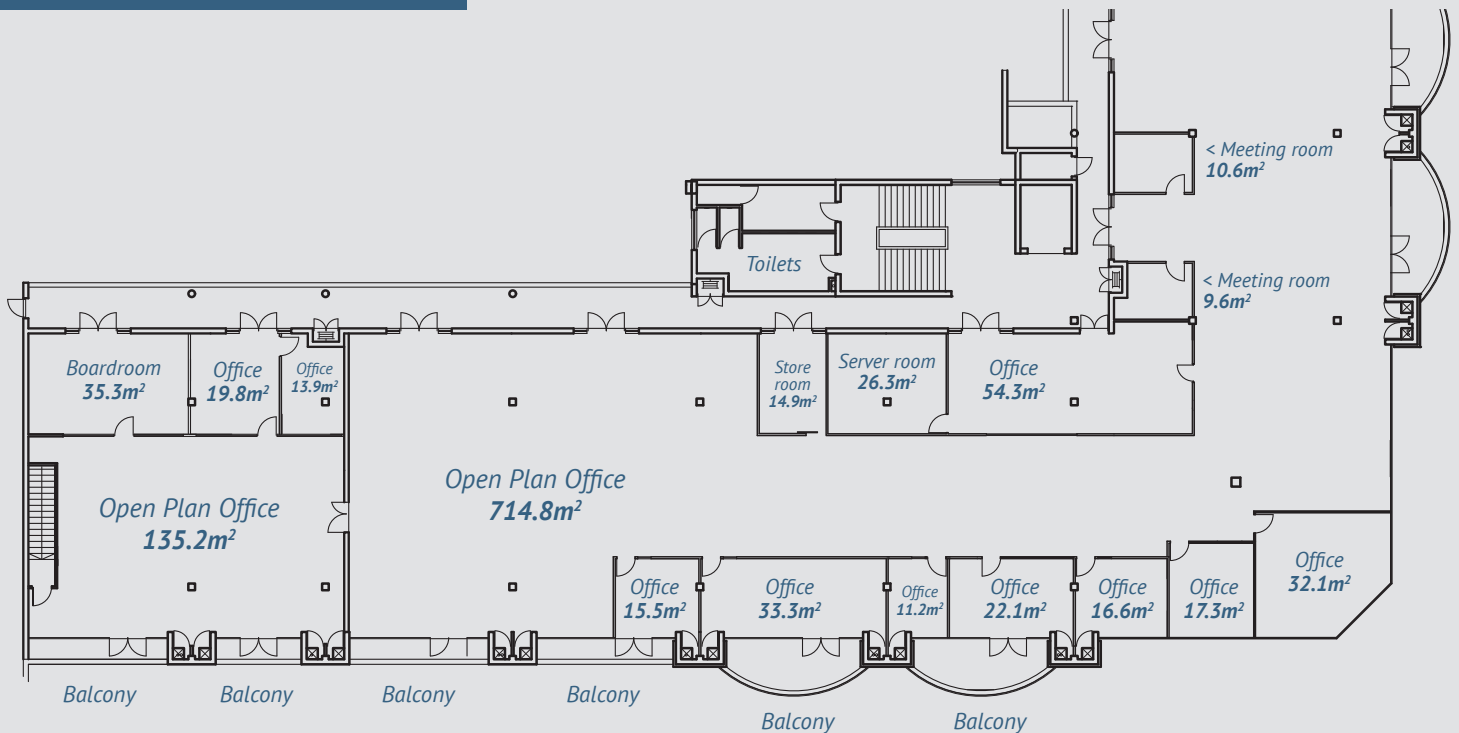
# FOURTH FLOOR

Full square metre: 353m<sup>2</sup>



# FIFTH FLOOR

Full square metre: 1283m<sup>2</sup>



**OCCUPANCY FROM 1ST FEBRUARY 2019** – *competitively priced.*