

SPACE  
TO LET

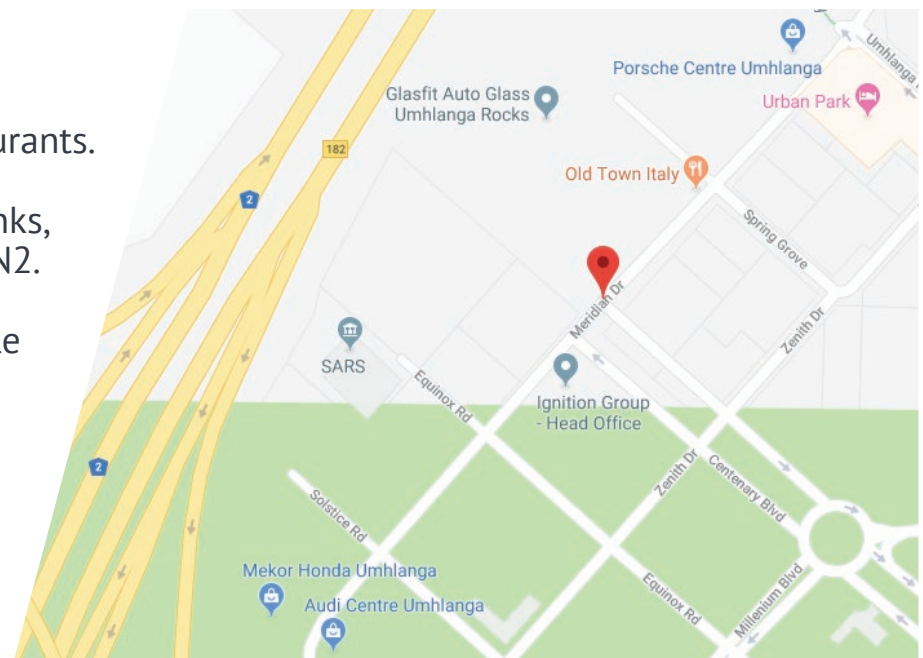


# MERIDIAN BUILDING

Meridian Park, Meridian Drive,  
Umhlanga

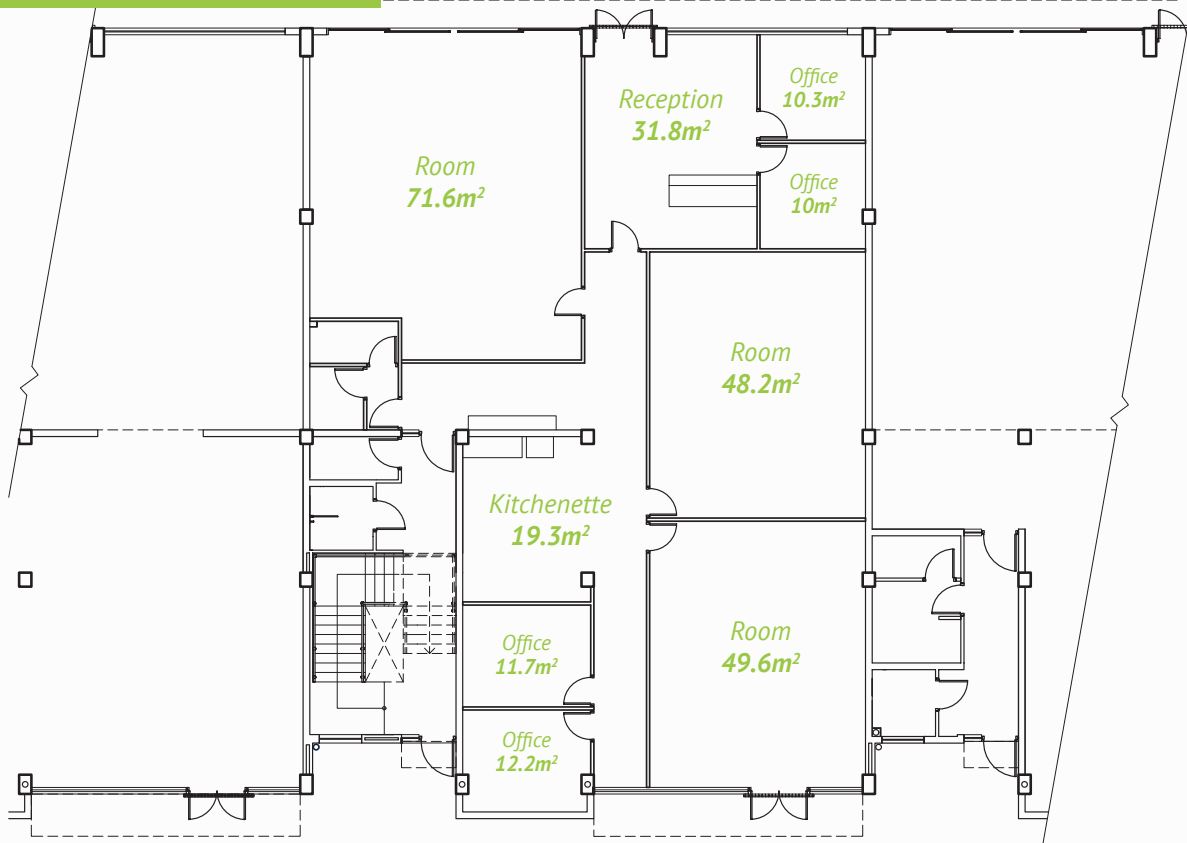
Primely located within the midst of the hustle and bustle of the Umhlanga Ridge is this versatile commercial property. Offering a total of 670m<sup>2</sup>, this secure retail and office space spans over two floors and can be rented as a whole or considered for sub-letting.

- ✓ Walking distance to Gateway, the Crescent, hotels, and restaurants.
- ✓ Convenient public transport links, and easy access from M4 and N2.
- ✓ Secure parking spaces available to rent.



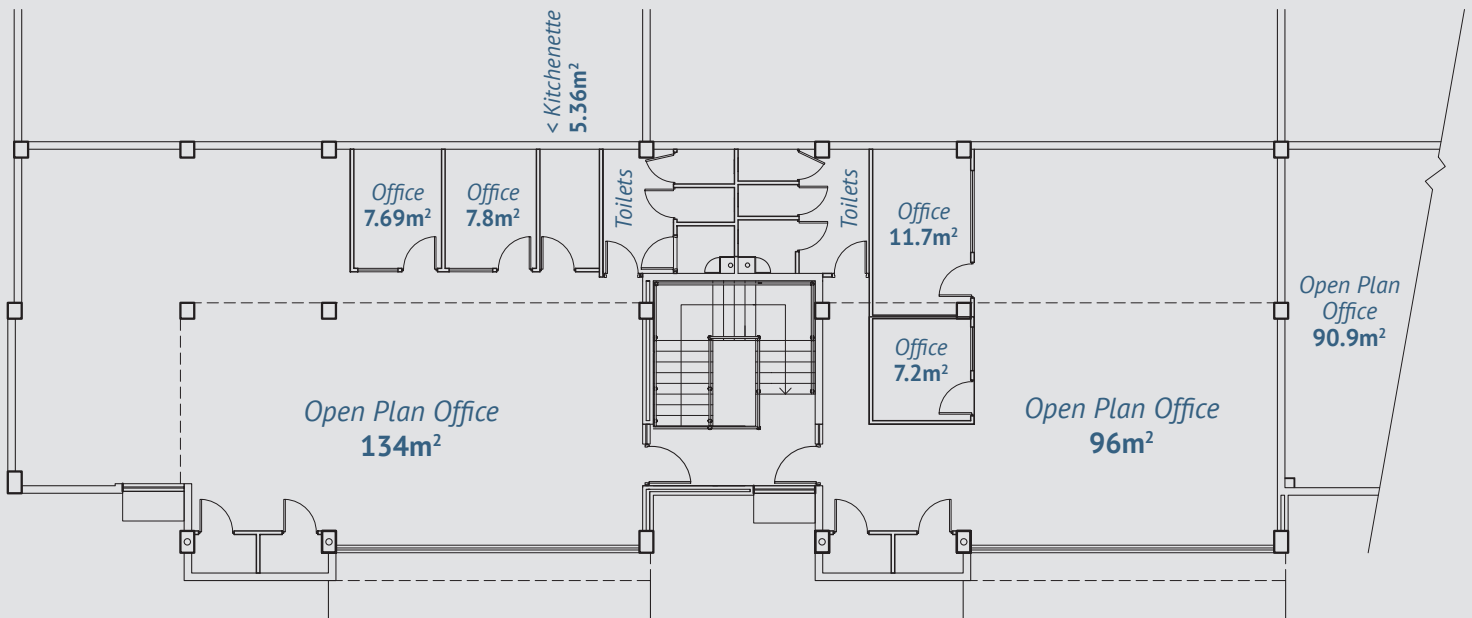
# GROUND FLOOR

Full square metre: **345m<sup>2</sup>**



# FIRST FLOOR

Full square metre: **325m<sup>2</sup>**



**OCCUPANCY FROM JANUARY 2019 TO OCTOBER 2020** – rental rates start from R150 p/m<sup>2</sup>.